

2023 company overview

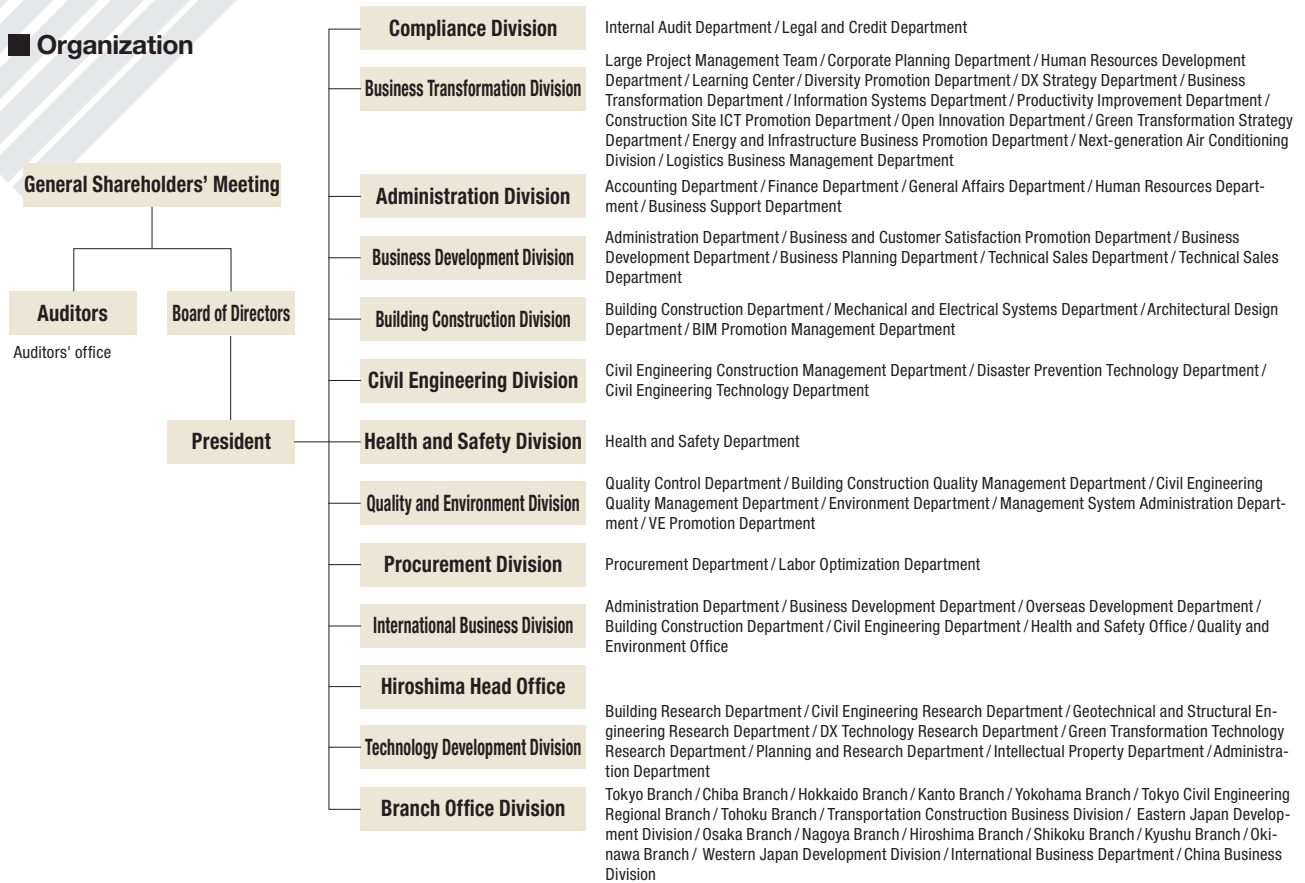
Overview

Company name	Fujita Corporation		
Headquarters address	4-25-2 Sendagaya, Shibuya-ku Tokyo, 151-8570 Japan (Headquarters address on commercial registry: 4-32-22 Nishi-Shinjuku, Shinjuku-ku, Tokyo)		
Representative	President and CEO Yoji Okumura		
Established	December 1, 1910		
Incorporated	October 1, 2002		
Contractor's license	Ministry of Land, Infrastructure, Transport and Tourism (Special-4) No.19796		
Building lots and buildings transaction business license	Ministry of Land, Infrastructure, Transport and Tourism License (5) No. 6348		
Capital	14 billion yen		
Number of employees	3,443 (As of April 1, 2023)		
Number of licensed employees	Doctorates in engineering, science, and other fields: 36 Registered architects, first class: 652 Registered supervising engineers of civil engineering work, first class: 774	Professional engineers: 209 Registered supervising engineers of construction work, first class: 1,029 Registered real-estate brokers (certified): 616	
Business details (Articles of Incorporation)	<ol style="list-style-type: none"> Contracting, planning, design, supervision, and consulting services for construction projects Research, planning, design, management, and consulting services related to space development, marine development, community development, urban development, resource development, and environmental improvement Real estate appraisals and business operations related to real estate buying, selling, trading, leasing, and management as well as agent and mediation services Type II nancial instruments business based on the Financial Instruments and Exchange Act, investment advice and agent services, and investment management services Business operations based on the Real Estate Specified Joint Enterprise Act Business operations related to the development and subdivision of residential property and the construction and sale of homes Business operations related to soil contamination studies, removal, and similar operations Business operations related to the maintenance and management of buildings, structures, and their equipment Ownership, management, and consulting services related to accommodation facilities, sports facilities, recreational facilities, health and medical facilities, educational facilities, and restaurants, as well as a travel agency business Business related to power generation and electricity supply by using wind power, solar power, geothermal power, hydropower, etc. Project development, acquisition, rentals, and sales related to industrial property rights, copyrights, other intangible property rights, expertise, and software, as well as information processing services" Business operations related to the development, sale, rental, maintenance, and management of computing devices, electronic devices, and similar equipment Business operations related to project development and sales in connection with information and telecommunication systems Business operations related to multimedia research and development Manufacturing, processing, sales, and rentals of construction materials, equipment, and machinery Business operations related to research, development, manufacturing, sales, rentals, maintenance, management and international trade of living environment equipment Worker dispatch services Money lending and other nancial services All business operations incidental to the aforementioned items 		

Directors and officers of Fujita

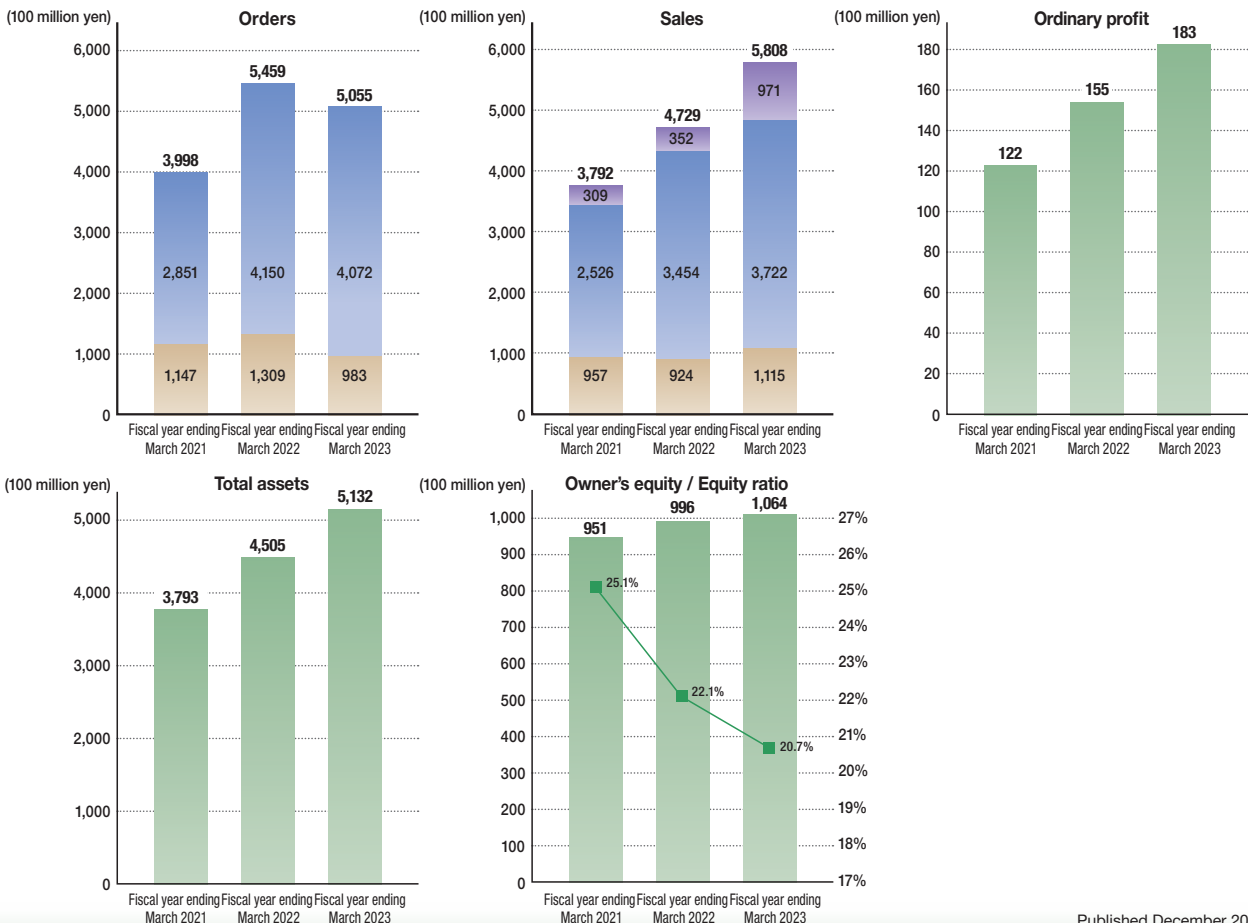
Representative director	President	Yoji Okumura						
Representative director	Senior managing executive officer	Masayuki Asakawa Toru Hirano						
Director	Senior managing executive officer	Naoki Nishioka						
Director	Executive operating officer	Masahiro Fujii	Michikazu Sora	Tokizo Okano	Tatsuya Ide	Seiji Kimishima	Yukitsuna Yamaguchi	
Director		Toshiaki Tao	Masaaki Shigetomi	Satoshi Nankou				
Director		Takeshi Kosokabe Yoshiyuki Murata			Masanori Shiina			
Auditor		Katsumi Kobayashi Koichiro Takayama						
Operating officer	Senior executive operating officer	Katsuhide Kida						
	Executive operating officer	Osamu Moriyoshi	Masahiro Okada	Yasuhide Araya	Ryuichi Miura	Yoshio Saeki		
	Senior operating officer	Toyota Fusejima	Akihisa Sato	Masaaki Nakai	Shin Watanabe	Yoshinori Kumita	Atsushi Yoshida	Shigeru Shimodaira
	Operating officer	Toshiya Takasu	Takayoshi Hirahara	Koichi Kaneko	Takeya Okuyama	Hiroshi Shinohara	Keiichi Mizutani	
		Hidetoshi Aizono	Junichi Higaki	Norio Nakamura	Takero Takiura	Yuichi Masuyama	Katsumi Maehara	Tsuyoshi Tsuchida

Organization



Fujita Corporation's business results (Civil engineering Construction Development, etc.)

*Figures from the fiscal year ending March 2022 onward are consolidated figures



■ Branches and offices

Head office	SYD Building, 4-25-2 Sendagaya, Shibuya-ku, Tokyo TEL : 03-3402-1911 FAX : 03-3404-8477
Hokkaido Branch	9th floor, Kyoto Ekimae Building, 3-1 Kita 4-jo Nishi, Chuo-ku, Sapporo-shi TEL : 011-251-6151 FAX : 011-281-2194
Tohoku Branch	3-7-33 Tsutsujigaoka, Miyagino-ku, Sendai-shi TEL : 022-794-8550 FAX : 022-794-8954 Aomori Office TEL : 017-734-7397 FAX : 017-775-3488 Morioka Office TEL : 019-622-4639 FAX : 019-654-6102 Yamagata Office TEL : 022-794-8559 FAX : 022-794-8954 Fukushima Office TEL : 024-572-6435 FAX : 024-572-6436
Tokyo Branch	4-32-22 Nishi-Shinjuku, Shinjuku-ku, Tokyo TEL : 03-5309-2100 FAX : 03-5309-2373 Tama Office TEL : 042-527-1270 FAX : 042-527-1143 Yamanashi Office TEL : 055-235-2968 FAX : 055-235-2140
Chiba Branch	1-15-1 Benten, Chuo-ku, Chiba-shi TEL : 043-253-1911 FAX : 043-253-1441 Tokatsu Office TEL : 04-7192-6311 FAX : 04-7192-6312
Kanto Branch	17th floor, Sonic City Building, 1-7-5 Sakuragi-cho, Omiya-ku, Saitama-shi TEL : 048-657-1630 FAX : 048-657-1492 Ibaraki Office TEL : 029-828-6651 FAX : 029-828-6652 Tochigi Office TEL : 028-688-7100 FAX : 028-688-7111 Hokuriku Office TEL : 076-263-7156 FAX : 076-263-0576 Niigata office TEL : 025-243-1911 FAX : 025-241-2653 Nagano Office TEL : 026-227-3651 FAX : 026-228-4396 Toyama Office TEL : 076-432-6400 FAX : 076-442-3306
Yokohama Branch	Kinko Bldg 5F, 7-3, Kinko-cho, Kanagawa-ku, Yokohama-shi TEL : 045-594-6722 FAX : 045-594-6746 Kawasaki Office TEL : 044-299-6351 FAX : 044-299-6352 Shounan Office TEL : 046-373-8564 FAX : 046-373-8572
Tokyo Civil Engineering Regional Branch	5th floor, 4-32-22 Nishishinjuku, Shinjuku-ku, Tokyo TEL : 03-5309-2694 FAX : 03-5309-2583
Nagoya Branch	4th floor, Unryu Flex West Building, 2-1-9 Shinsakae, Naka-ku, Nagoya-shi TEL : 052-259-6000 FAX : 052-259-6017 Toyota Office TEL : 056-585-8615 FAX : 056-585-8616 Shizuoka Office TEL : 054-287-5175 FAX : 054-287-3570 Fuji Office TEL : 054-567-3022 FAX : 054-567-3033 Hamamatsu Office TEL : 053-543-7970 FAX : 054-287-3570 Mie Office TEL : 059-351-1801 FAX : 059-351-1802

Transportation Construction Business Division	Zenno Shinjuku Building 5-27-13 Sendagaya, Shibuya-ku, Tokyo TEL : 03-3376-3140 FAX : 03-5315-0597
Osaka Branch	Fujita/Toyobo Building, 2-1-16 Dojima, Kita-ku, Osaka-shi TEL : 06-6348-4510 FAX : 06-6345-4560 Kobe Office TEL : 078-331-9414 FAX : 078-331-9417 Keiji Office TEL : 075-354-3326 FAX : 075-344-4771 Wakayama Office TEL : 073-432-3836 FAX : 073-432-8843
Hiroshima Head Office	5th floor, Fujita Building, 8-6 Nakamachi, Naka-ku, Hiroshima-shi TEL : 082-207-0580 FAX : 082-207-2126
Hiroshima Branch	7th floor, Shinhiroshima Building, 13-15 Nobori-Cho, Naka-ku, Hiroshima-shi TEL : 082-577-8980 FAX : 082-222-7601 Okayama Office TEL : 086-241-1361 FAX : 086-243-5596 Hiroshima Toubu Office TEL : 084-820-1455 FAX : 084-824-7066 Yamaguchi Office TEL : 083-941-5860 FAX : 083-941-5862 Tokuyama Office TEL : 083-421-0581 FAX : 083-422-0898 Sanin Office TEL : 085-937-5987 FAX : 085-922-3657
Shikoku Branch	2274-3 Ootashimo-machi, Takamatsu-shi TEL : 087-867-8711 FAX : 087-867-9001 Matsuyama Office TEL : 089-924-5045 FAX : 089-924-5062 Kochi Office TEL : 088-832-3721 FAX : 088-832-3704
Kyushu Branch	Mejjidori Business Center Main Building, 1-1 Shimokawabata-machi, Hakata-ku, Fukuoka-shi TEL : 092-281-0661 FAX : 092-281-0232 Kita Kyushu Office TEL : 093-541-2636 FAX : 093-541-2638 Oita Office TEL : 097-532-3165 FAX : 097-532-3166 Nagasaki Office TEL : 095-823-4231 FAX : 095-823-6410 Kumamoto Office TEL : 096-353-5122 FAX : 096-352-1165 Minami Kyushu Office TEL : 099-251-1555 FAX : 099-251-1556 Nobeoka Office TEL : 098-220-3817 FAX : 098-220-3818
Okinawa Branch	10th floor, Denpado Building, 2-12-21 Kumoji, Naha TEL : 098-863-7351 FAX : 098-863-6973
Architectural Design Department	Zenno Shinjuku Building 5-27-13 Sendagaya, Shibuya-ku, Tokyo TEL : 03-6384-1424 FAX : 03-6384-1491
Eastern Japan Development Division	SYD Building, 4-25-2 Sendagaya, Shibuya-ku, Tokyo TEL : 03-3796-2207 FAX : 03-3796-3103
Western Japan Development Division	Fujita Toyobo Building, 2-1-16 Dojima, Kita-ku, Osaka-shi TEL : 06-6147-6153 FAX : 06-6147-6154
Technology Development Division	2025-1 Ono, Atsugi-shi, Kanagawa TEL : 046-250-7095 FAX : 046-250-7139

■ Overseas offices

Shanghai Office	TEL : +86-21-6841-5522
Hong Kong Branch	TEL : +852-2311-1398
Philippine Branch	TEL : +63-2-8856-06-21/23
Seoul Branch	TEL : +82-2-757-6547
Hanoi Office	TEL : +84-24-3726-2452/2454
Ho Chi Minh Office	TEL : +84-28-3512-0757
Mexico Branch	TEL : +52-55-5574-3599
Taipei Branch	TEL : +886-2-2541-3600
Dubai Branch	TEL : +971-4-323-7022

India Office	TEL : +91-44-4857-4048
Yangon Branch	TEL : +95-1-373634
Malaysia Branch	TEL : +60-3-2287-6188
Singapore Branch	TEL : +65-6337-3336
Doha Branch	TEL : +974-4476-3463
Kenya Branch	TEL : +254-20-513-8505
Peru Branch	TEL : +51-01-773-6969
Bangladesh Office	TEL : +880-96-7760-1030

■ Overseas Affiliated Company

Fujita Americas, Inc.
Fujita (China) Construction Co., Ltd.
Fujita Philippines Construction and Development, Inc.
Fujita Corporation Vietnam
Fujita Engineering India Pvt., Ltd.
Fujita Integral Mexico S.A. de C.V.
Fujita Corporation (M) Sdn. Bhd.
Fujita Corporation (Thailand) Ltd.

History

1869 onward: Extensive infrastructure development takes place as Japan modernizes

- 1869 » Sentaro Nomura, our first president, establishes Nomura-gumi in Shinjuku (Daiwa Odakyu Construction)
- 1910 » The company's first full-fledged civil engineering construction project is completed (Daiwa Odakyu Construction)



Railway laying project for Seiso Electric Railway

- » Ichiro Fujita and his younger brother Sadaichi start a company together in Hiroshima City (Fujita)



Ichiro Fujita

Sadaichi Fujita

- 1928 » The company receives an order to build a steel frame for the Metropolitan Police Department building, a steel frame structure weighing over 6,000t (Fujita)



Metropolitan Police Department steel frame project

1945 onward: Postwar recovery brings a period of high economic growth

- 1945 » World War II ends when atomic bombs are dropped on Hiroshima and Nagasaki



- » The company works on the rebuilding of Hiroshima Red Cross Hospital after the atomic bombing (Fujita)
- » The company works on the rebuilding of Shinjuku after the destruction by air raids (Daiwa Odakyu Construction)

- 1962 » The company utilizes its extensive experience overseas (Fujita)



The company dispatches a South American study group



Japanese booth at Pacific International Trade Fair (Peru)

- 1964 » Tokyo Olympics held



Komazawa Olympic Park Olympic Memorial Tower (Fujita)

- 1968 » Value engineering is introduced for the first time by a Japanese construction company (Fujita)

1970 onward: Branching out from construction: Shift to convenient cities and environments

- 1975 » The company completes Nagasaki Airport, the world's first offshore airport (Fujita)



(photo taken 1982)

- 1985 » The company strengthens its urban development business (Fujita)



Hiroshima Alpark



Saitama Industry and Culture Center (Sonic City)

- 1998 » The company carries out quake-proofing of bridge piers to protect them from major earthquakes (Daiwa Odakyu Construction)



Reinforcement of Sakawa River bridge, Tomei Expressway

2000 onwards: New technology development opens up a new future in areas such as disaster prevention

- 2011 » The company carries out recovery work around the Tohoku area after the Great East Japan Earthquake



Yamamoto Town, Watarai District, Miyagi Prefecture, where the company carried out renewal work (Fujita)

- 2013-2015 » Fujita joins the Daiwa House Group in 2013, following Daiwa Odakyu Construction in 2008

FUJITA

- » Fujita merges with Daiwa Odakyu Construction in 2015

Daiwa House Group

- 2017 » The company completes Japan's first 60-story condominium complex with proprietary support features including steel panel dampers and ultra-high-strength concrete



The Parkhouse Nishi Shinjuku Tower 60

- 2018 » The company completes Japan's first removal of a concrete dam
- » The company acquires ISO45001, ahead of the rest of the construction industry



Arase Dam, which was demolished

- 2021 » The company completes Daiwa House Group MIRAI KACHI KYOSO Center "Kotokurie". BIM is used throughout all processes for this training facility, from design to construction to maintenance and management of the building.



Daiwa House Group MIRAI KACHI KYOSO Center "Kotokurie"